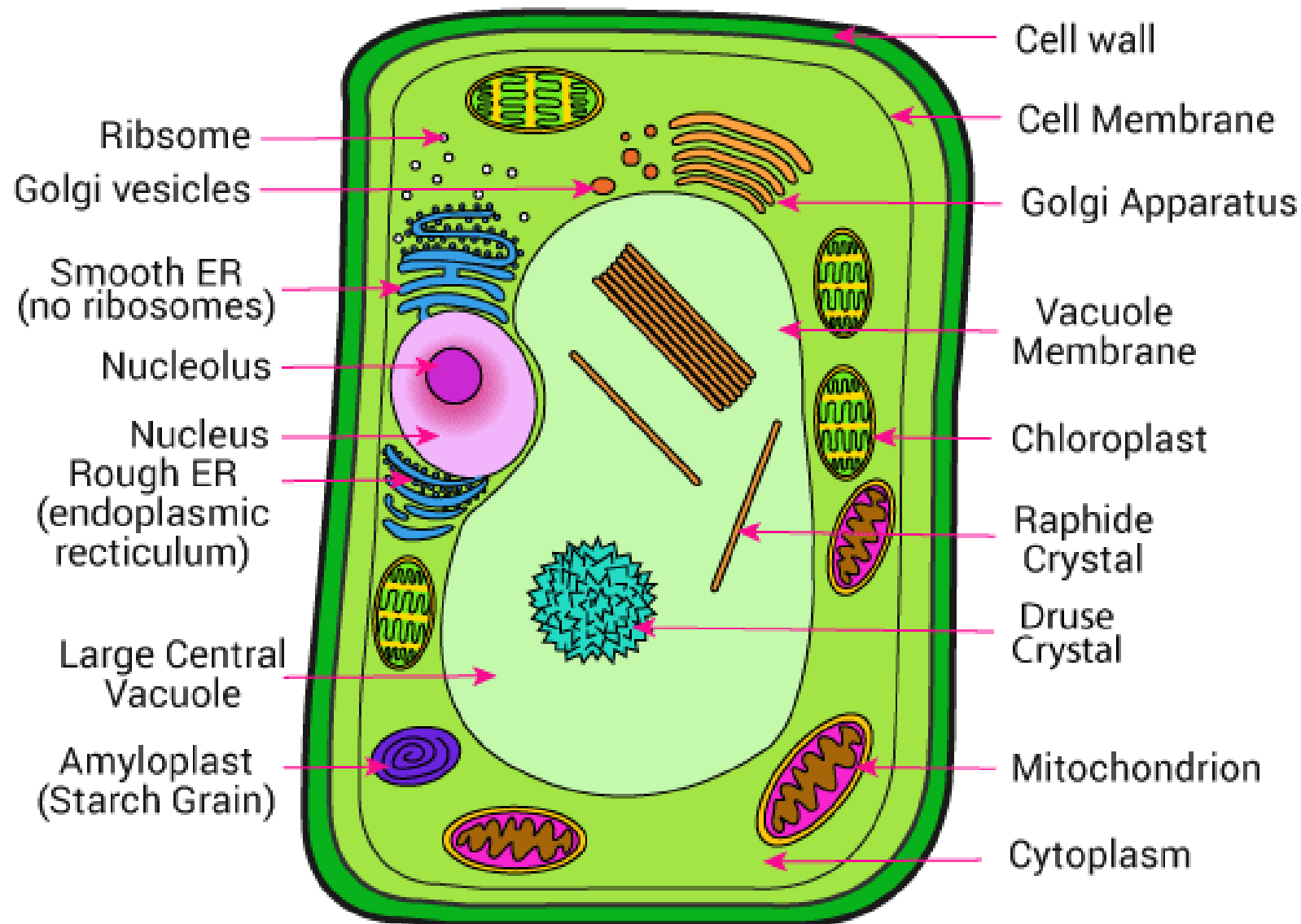
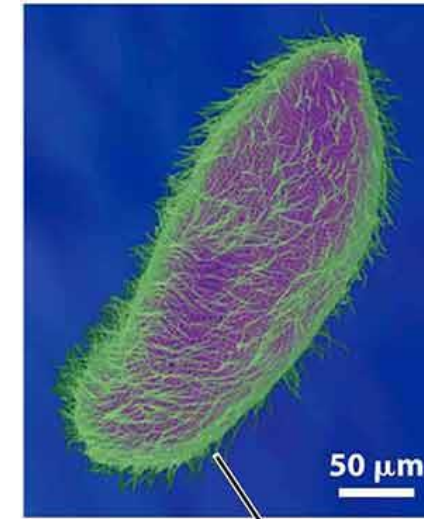
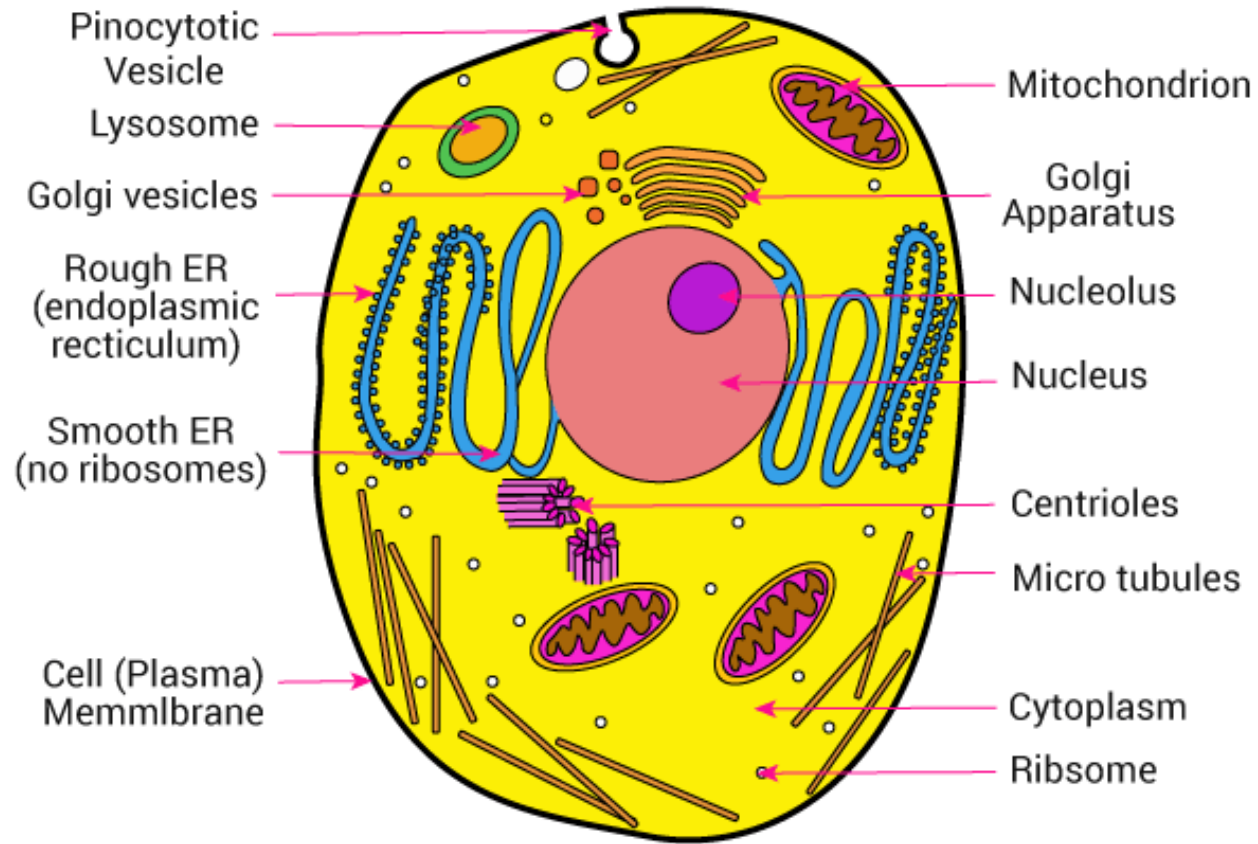


Plant Cell

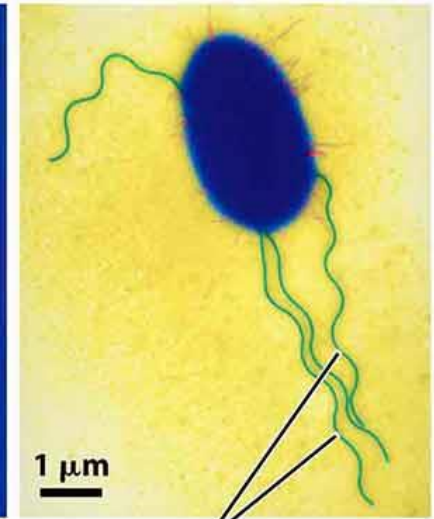


10 – 100 micrometers in length

Animal Cell



Cilia



Flagella

10 – 30 micrometers in length

Questions

1. What organelles do the plant and animal cell have in common?
2. What organelles are only found in plant cells?
3. What organelles are only found in animal cells?
4. How does the shape of the two cells compare?
5. How does the size of the two cells compare?
6. Why do you think plant cells have larger vacuoles and a cell wall and animal cells do not?
7. Why do you think plant cells are shaped differently than animal cells?
8. Why do you think animal cells have cilia and flagella and plant cells do not?